



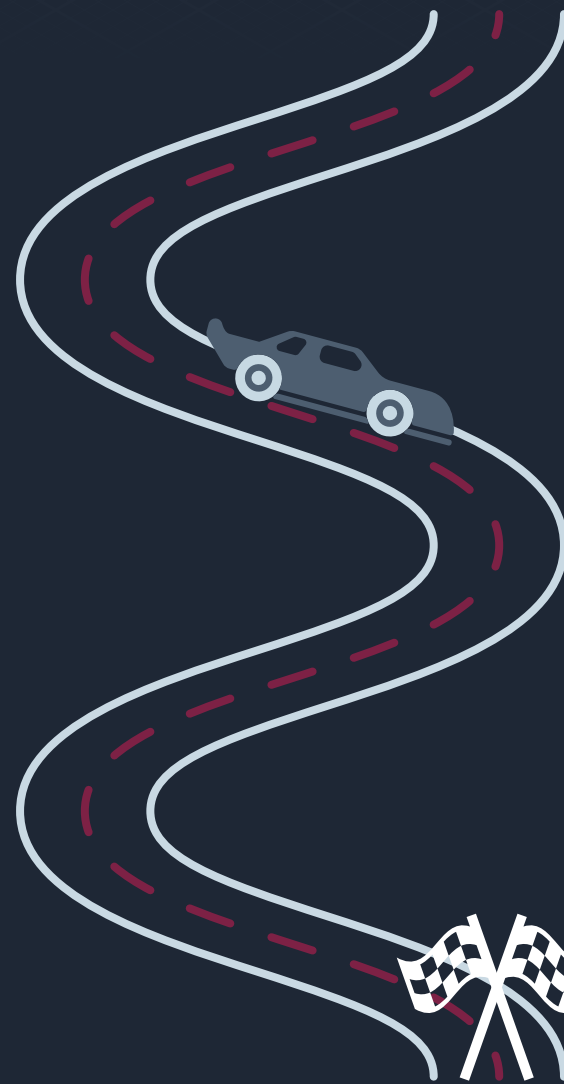
FASTER THAN YOU THINK!

Just a few quick steps and within minutes you'll see it all:

STEP 01 Download ControlUp from www.controlup.com – one executable, no fussy installation

STEP 02 Create your ControlUp Account

STEP 04 Add Computers – no boot required



STEP 03 Add Hypervisors – name and credentials, quick and easy

Good to go!

See and Manage the entire IT stack from one pane of glass using **ControlUp**.



Your IT Infrastructure is Looking Up

Looking to effectively manage your virtualization infrastructure and workloads?

ControlUp has it all and then some.



Total visibility of your Virtualization stack



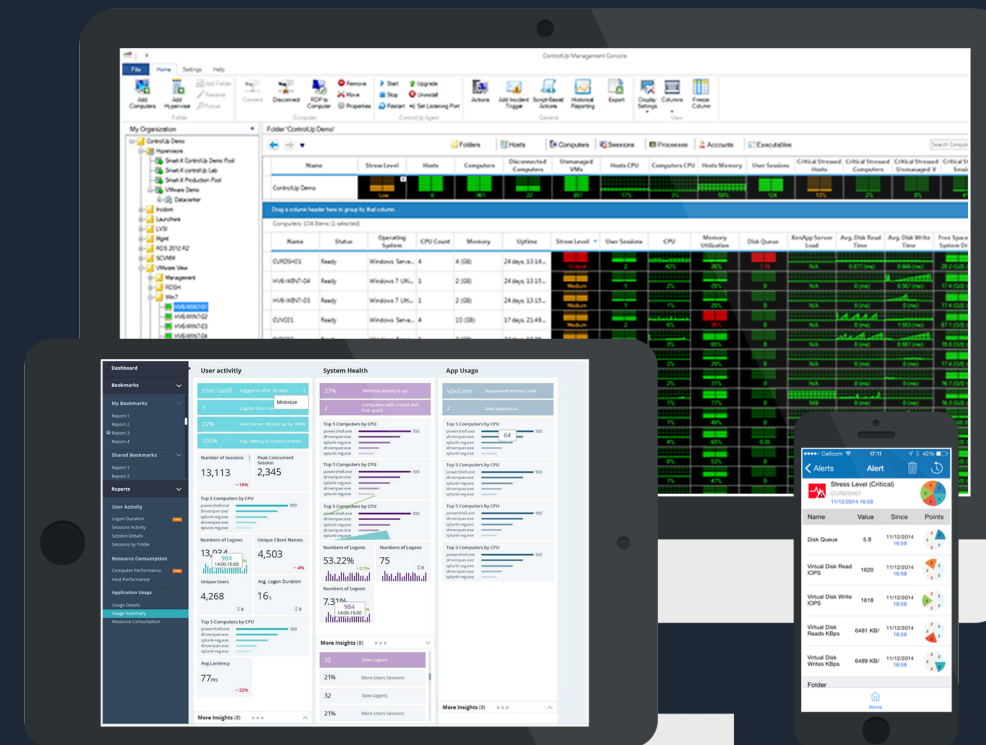
Immediate contextual problem remediation



Control and optimize your user's experience



Interactive analytics with a smart BI engine



1000+ CUSTOMERS WORLDWIDE

ABOUT CONTROLUP

First generation IT analytics and big data forever changed the IT industry. At ControlUp we are spearheading the Collective IT Analytics revolution. By harnessing the power of big data analytics from thousands of organizations we find patterns, detect problems, establish dynamic baselines and generate actionable insights – opening the door to smarter IT. Founded by Virtualization experts in 2009, ControlUp has its sales headquarters in the US and R&D headquarters in Israel.



FOR MORE INFORMATION: WWW.CONTROLUP.COM

FOR MORE INFORMATION: WWW.CONTROLUP.COM

Compatibility Matrix

VMware vSphere	6.x, 5.x	Citrix XenApp	7.x, 6.x, 5.x (64 and 32 bit)	Microsoft RDS	2016, WS 2012 R2, WS 2008 R2, WS 2003 TS/RDS
Microsoft Hyper-V	2016, 2012 R2	Citrix XenDesktop	7.x, 5.x	Windows Server	2016, 2012 R2, 2008 R2, 2008, 2003
Citrix XenServer	6.x, 7.x	VMware Horizon View	7.x, 6.x, 5.x	Windows Client	10, 8.x, 7, Vista, XP



Performance & Configuration Metrics

Workload Types

	Configuration Stats	CPU Metrics	Memory Metrics	Disk Metrics	Network Metrics	UX Metrics	XenApp	XenDesktop	Horizon View	AWS EC2
Folders/ Clusters/ Delivery Groups/ Regions	Hosts Count, Computers Count, VM Count, User Session Count, Critical Stressed Host/Computer Count	Avg. Hosts CPU, Avg. Computers CPU	Avg. Hosts Memory	N/A	N/A	Avg. Logon Duration, Avg. App Load Time	Avg. Sessions per Computer	Delivery Groups: Maintenance Mode, Enabled / Disabled, Desktop Kind, Available / Failed / Preparing / Unregistered Computers Count, Session Support, Delivery Type, Desktop Kind, Connection Failures Count	N/A	Performance: Avg. CPU Utilization, Disk Read/Write Operations, Network In/Out; Cost: Attached/Detached Elastic IP Hourly Cost, Attached/Detached Snapshot Hourly Cost, Attached/Detached Storage Hourly Cost, Days to Next RI Expiration Date, EC2 Instance Hourly Cost, Next RI Expiration Date, Number of Unutilized RIs, RI Upfront Hourly Cost, Total Hourly Cost, Unutilized RI Hourly Cost
Hosts	CPU Cores, CPU Sockets, Hypervisor Type, Hypervisor Version, Installed Memory, Running VM Count, Unmanaged VM Count, VM Count	CPU Usage %, vCPU/pCPU Ratio	Active Memory, Consumed Memory	Datastore R/W IOPS, Datastore Read Latency, Datastore Read Rate, Datastore Write Latency, Datastore Write Rate, Disk Device Latency, Disk Kernel Latency, Disk Queue Depth, Max Datastore Free Space, Min Datastore Free Space, Storage Repository Total Latency	NIC Dropped Received Packets, NIC Dropped Transmitted Packets, NIC Usage, NIC Received Packets Errors, NIC Transmitted Packets Errors	N/A	N/A	N/A	N/A	N/A
Storage	Datastore Name, Datastore Path, Capacity, Datastore Type, Storage I/O Control Enabled, vDisk Attached to, vDisk Controller Label, vDisk Datastore Name, vDisk Disk Mode, vDisk Disk Type, vDisk Host Name, vDisk Thin Provisioned, vDisk File Name	N/A	N/A	Total IOPS, Read/Write IOPS, I/O Latency, Read/Write Latency, Read/Write Rate, Free Space, vDisk Large/Medium/Small Seeks, vDisk Outstanding Read/Write Requests, vDisk Read, vDisk Read Latency, vDisk Read Load Metric, vDisk Read Rate, vDisk Read Request Size	N/A	N/A	N/A	N/A	N/A	N/A
Computers/ VMs/VDAs/ Cloud Instances	Model, Name, OS, OS SP, Physical Addresses, Registered IP Addresses, VM Name*, VM Power State*, VM Tools State*, VM Tools Version*, VM Tools, Hypervisor Platform*, Error Rate Version State*, Guest Name*, Host Name*, DNS A Records, Domain DNS, Domain Role, CPU Count	Host CPU Usage*, Processor Queue Length, CPU Excessive SMP Use*, CPU Ready*, CPU Swap Wait*, CPU System Time*	Active Memory*, Memory, Memory SwapIn Rate, Memory SwapOut Rate, Memory Utilization, Physical Memory Used, Pages/sec, Paging File, Non-paged Pool Memory, Dynamic Memory Avg. Pressure*, Dynamic Memory Enabled*, Max / Min Memory*, Memory Demand*, Memory Status*, Startup Memory* (Hyper-V only)	Disk Queue, Disk Reads/sec, Disk Transfers/sec, Disk Writes/sec, Avg. Disk Read Time, Avg. Disk Write Time, Free Space on System Drive, Max Free Space Drive, Min Free Space Drive, Physical Disk Time, Virtual Disk Read IOPS*, IOPS*, Virtual Disk Read Latency*, Virtual Disk Read KBps*, Virtual Disk Write IOPS*, Virtual Disk Write Latency*, Virtual Disk Write KBps	Net Bytes Received/sec, Net Bytes Sent/sec, Net Bytes Total/sec, Dropped Received Packets*, Dropped Transmitted Packets*	Avg. Logon Duration, Avg. App Load Time	Active Sessions, Processes, ASP Request Queued (Citrix Web Interface), ASP Request Rejected (Citrix Web Interface), CSG Connections, PVS vDisk File Name, Workitem Queue Ready Count, # of Published Applications, Datastore Connection Failure, Edition, Farm, License Check-Out, License Server Connection Failure, Load Evaluator, Number of Busy XML Threads (Citrix XML Broker), Resolution Time (Citrix XML Broker), Resolution Time (Citrix XML Broker), Resolution Workitem Queue Ready Count, Server Load, Server Logon Mode, Version, Worker Group, Zone, Zone Data Collector, Citrix Licenses - Available & In-use, Top Citrix License Utilization, Session Disconnect Rate, Number of ICA Sessions, PVS RAM Cache Usage	VDA: Availability, Maintenance Mode, Allocation Type, Desktop Kind, Last Failure Time and Type, Registration State and Failure Details, Provisioning Type, Session Support, User Changes Persistence, Current Status, License Utilization; Brokers: Services Status and Health (AD Identity, Broker, Central Configuration, Delegated Admin, Hosting Unit, Monitor, MCS), Hypervisor Connections Availability, Number of Registered Desktops;	Active Sessions, Processes, View Agent Version, Virtual Disk Read IOPS, Virtual Disk Write IOPS	Configuration: Elastic IP, Host ID, IAM Role, Instance ID, Instance Lifecycle, Instance Status, Instance Type, Kernel ID, Key Name, Root Device Name, Root Device Size, Root Device Type, Security Group (ID), Security Group (Name), Source/Dest Check, State. Performance: CPU Utilization, Disk Read Operations, Disk Write Operations; Cost: Attached Elastic IP Hourly Cost, Attached Snapshot Hourly Cost, Attached Storage Hourly Cost, Catalog Price per Hour, Days to RI Expiration Date, EC2 Instance Hourly Cost, RI Expiration Date, RI Upfront Hourly Cost, Total Hourly Cost.
Sessions	Session Name, State, User, Processes, Connect Time, Disconnect Time, Domain DNS, ID, Logon Time, Branch Name, User Active Directory Full Name, User Active Directory OU Path and Name	Session CPU	Memory (Private Bytes), Memory (Working Set), Page Faults/sec	I/O Read Operations/sec, I/O Write Operations/sec	N/A	Logon Duration, Avg. App Load Time, Logon Simulator, Protocol Latency, Protocol Bandwidth Usage/Limit	Citrix Receiver Version, Client IP, Client Name, Avg. Protocol Latency, Idle Time, Initial Program, Branch Name	Receiver Version, Client IP, Client Name, Connection Protocol, Protocol Bandwidth Consumption, Protocol Bandwidth Limit, Applications In Use, Authentication Duration, Brokering Date & Duration, Connected Via Host/IP, Disconnect Date & Reason, HDX Connection Load Time, Logon Scripts Load Time, VM Start Duration	Client IP, Client Name, Idle Time, View Client, Connection Server URL, Domain, Protocol, Tunnel, Type, Branch Name, Avg. Protocol Latency, PCoIP Kbit/sec - Session Avg.	N/A
Processes	Created Time, Command Line, Publisher, Exe Name, Exe Size (KB), Exe Version, Exit Code, Exit Time, Modified Time, PID, Priority, Parent Session ID, Start Time	Process CPU	Memory Private Bytes and Working Set, Page Faults/sec	I/O Read Operations/sec, I/O Write Operations/sec	N/A	Application Load Time, Application Load Time Profiler	N/A	N/A	N/A	N/A

Contextual Management Actions

Computers Actions	Flush DNS, RDP to Computer, Send Super Message, Reboot Machine, Send Wake-On-LAN Signal, Shutdown Machine, Refresh Machine Group Policy, Import Registry, Disable Process Execution, Enable Process Execution, Run As, Launch Event Viewer, Admin\$, NSLookup, Ping, Test WMI, Trace, Force Power Off VM, Force Reset VM, Power On VM, Restart Guest, Shutdown Guest, Enable / Disable Maintenance Mode	Controllers	Manage the registry, services, file system & programs and updates on multiple targets: comparison and batch management
Sessions Actions	Chat, Remote Assistance, Disconnect Session, Log Off Session, Shadow Session, Send Super-Message, Get Session Screenshot, Refresh User Group Policy, Kill Policy, Reapply Group Policy, Registry Import, Start Process in Session	Script Based Actions	
Processes Actions	End Process, Kill Process, PSkill Process, Set Process Priority, Start CPU Throttling	Script Engines	PowerShell, VB, Batch
Permission Delegation	Delegate management actions based on AD group membership	Advanced Features	Multiple Execution Contexts, Map Columns to Arguments
		Sample Scripts	Get PVS Write Cache Size, Analyze GPO Extension Load Time, Show IE URL's, Analyze Logon Duration, Get PVS Target Device Metrics, Analyze GPO Extension Load Time

Interactive Historical Reporting

Resource Consumption	Host, VM, User Session and Application Resource Consumption	Application Usage	Application Usage Summary, Application Usage Details	Analytics	IT dashboard with BI findings and drill-down
User Sessions	User Sessions Count, User Sessions Activity, User Session Details	VDI Management	Logon Duration, Client Versions, Protocol Latency, License Usage	Enterprise Features	Web and Mobile UI, Scheduled Reports, Permission Delegation